

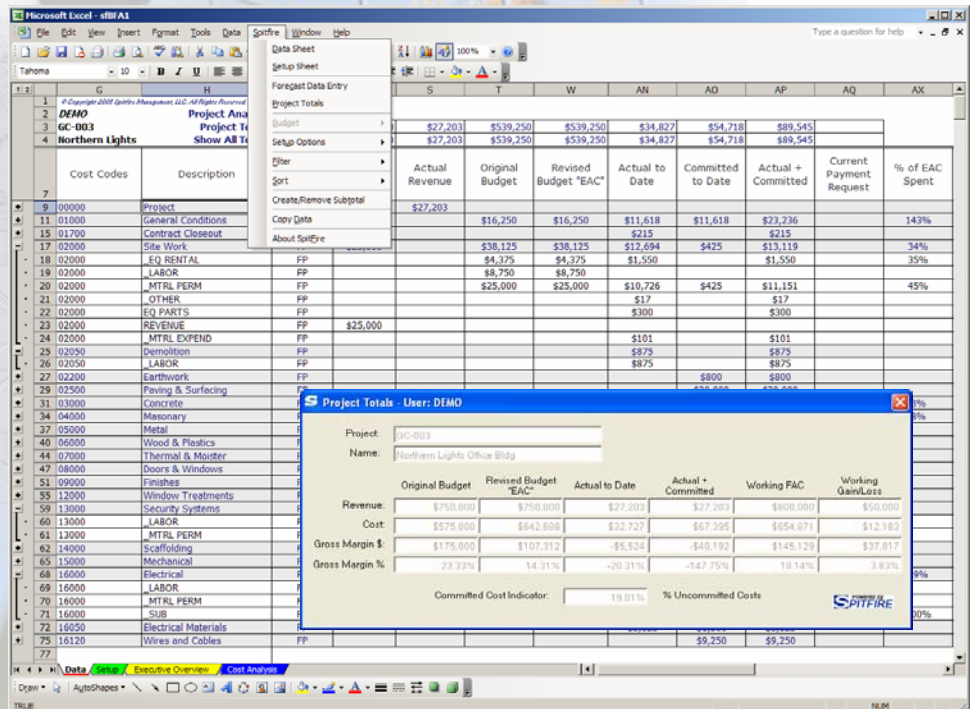
# Budget/Forecast/Analysis

Spitfire's Budget/Forecast/Analysis (BFA) spreadsheet combines the ease-of-use, reliability and versatility of Excel with Spitfire's unique security, document control, and work-flow. This combination brings you a true state-of-the art package including:

- User-level security
- Site and User preferences stored by view (Hide/show columns, Rename columns, filters and sorts, set defaults)
- Predefined Filters and multiple sort options to focus on user-selected Cost Codes/Tasks and/or Account Categories/Cost Types
- Up to three level of detail – for example, Division, Cost Codes, Account Categories
- Drill-down to source documents for Actual-to-date and Committed-to-date amounts
- User notes stored by row, with drill-down to history with prior revisions.
- Project Totals summary , as well as Column and filter totals
- Forecast changes identified as interim or posted
- Copy/export data to another workbook for further analysis etc.

## Technology

CodeBehind build in Microsoft .Net  
 Data stored in same SQL database as Dynamics SL  
 Data transfer using XML  
 User interface Microsoft Excel 2003



Project	Original Budget	Revised Budget "EAC"	Actual to Date	Actual + Committed	Working FAC	Working Gain/Loss
Revenue:	\$750,000	\$750,000	\$27,203	\$27,203	\$608,000	\$50,000
Cost:	\$575,000	\$642,606	\$32,727	\$67,395	\$654,071	\$12,163
Gross Margin \$:	\$175,000	\$107,312	-\$5,524	-\$40,192	\$148,129	\$37,817
Gross Margin %:	23.33%	14.31%	-0.71%	-4.75%	18.14%	3.83%

By offering three views of your data, Project Managers, Executives and Accountants can quickly and easily zero in on the precise data they need for their cost analysis.

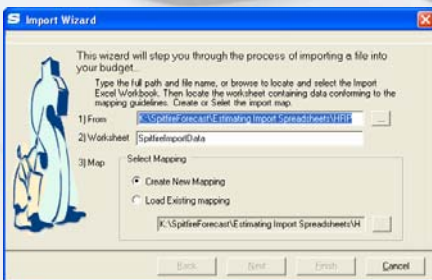
## Project Analysis – snapshot of the project's current status including:

- Current Budget with revision amounts
- Real-time Actual and Commitment amounts
- Current Forecast projections

# Budget/Forecast/Analysis

**Budgeting** – create and maintain the project budget with a built-in review and approval process; including:

- Create New – Builds the project's Work Breakdown Structures from scratch by Adding Cost Codes/Tasks and Cost Types/Account Categories and Amounts and/or Units for each
- Create from Existing - copies an existing project's budget
  - Base new budget on Original Budget, EAC, Actuals or FAC
  - Option to copy all or some rows from the existing budget
  - Apply multipliers to Amounts or Units
- Import Wizard
  - Capable of working with mixed source documents that store the Account Categories amounts in either row or column format. Source documents could be packaged estimating applications with Excel export, or homegrown Excel spreadsheets.
  - Create multiple import maps and save for repetitive use.
  - All import methods check for existing Cost Codes and Account Categories to prevent duplication and offers user keep or replace option.
  - All import rows displayed in a selection form where the user can choose which rows to import.
- Budget Revision
  - Maintains Original Budget and tracks Revisions in separate columns
  - Add Cost Codes/Tasks and Account Categories/Cost Types just like being in creation mode
  - Multiple saves and closing/opening available between approvals



**Forecasting** –create and maintain the project forecast with built-in algorithms, including:

- Review and approval process
- Industry-recommended forecasting algorithms to project Forecast-At-Completion and Forecast-To-Complete for Cost Codes/Tasks and Cost Types/Account Categories
- Forecast data generated based on Units of Production or Amounts
- Consolidation Form brings all forecast related fields into one convenient popup form: Costing Method, Revised EAC, Actual + Committed, Current Position, Change Amount, Working FAC, Working Gain/Loss
- Tracks and identifies changes, by who, what, and when – for each Cost Code and Account Category
- Declare Values for Percentage Complete and Units Complete allow PMs to position the base from which to forecast to reflect reality when actual values may lag behind
- What if – change any of the following: % Spent or % Complete, Production Units, Amounts, Production Unit

## Filters

- Above or Below \$ Gain/Loss
- Above or Below % Spent
- Above or Below % Complete
- Past Days of Activity
- Cost to Date
- Specific Cost Code(s)
- Mask of Cost Code
- Specific Account Category
- Best Chances and Lost Causes
- Cost Code with Changes

## Sorts

- Gain/Loss
- % Spent
- % Complete
- Date of Last Posting
- Cost Code

